



# RRWD

ROSEAU RIVER WATERSHED DISTRICT



## 2020 Annual Report



# 2020 DISTRICT INFORMATION

## OFFICE INFORMATION

The Roseau River Watershed District (RRWD) office is located at 714 6<sup>th</sup> Street SW, Roseau and is open 8 a.m. - 4 p.m., Monday - Friday. The phone number is (218) 463-0313 and the e-mail address is [rrwd@mncable.net](mailto:rrwd@mncable.net).

In 2020 the Board held regular business meetings, on the first Wednesday of each month, at 8:00 a.m. (April – Dec.) and 12:00 p.m. (Jan. – March). All of the meetings held by the Roseau River Watershed are open to the public.

## BOARD OF MANAGERS

A Board of Managers governs the Roseau River Watershed District. The Board has five managers, four appointed by the Roseau County Board of Commissioners and one appointed by the Kittson County Board of Commissioners. The 2020 members were:

Chairman – Jason Braaten  
30957 340<sup>th</sup> St  
Badger, Minnesota 56714

Secretary - Cody Schmalz  
4529 400<sup>th</sup> Street  
Lancaster, Minnesota 56756

Vice -chair – Tony Wensloff  
37232 240<sup>th</sup> St  
Roseau. Minnesota 56751

Treasurer- Carter Diesen  
40141 160<sup>th</sup> St  
Wannaska, MN 56761

Manager – LeRoy Carriere (term ended Oct.)  
504 4<sup>th</sup> Ave NE  
Roseau, MN 56751

Manager -- LaVerne Voll (term began Nov)  
35572 520<sup>th</sup> Ave  
Salol, MN 56756

## EMPLOYEES AND CONSULTANTS

The District has Two full time employees, an Administrator and a Watershed Specialist, as well as a part-time Watershed Assistant. Citizens are encouraged to contact the staff or managers at any time with their concerns or suggestions.

Administrator – Tracy Halstensgard

Watershed Specialist – Torin McCormack

Watershed Assistant – Tracy Bergstrom

Attorney – Michelle Moren, Roseau

Accounting Firm – Brady Martz, Thief River Falls

# **ESTABLISHMENT**

The Roseau River Drainage and Conservancy District, having been established by Order of the District Court, Roseau County, dated August 13, 1920, under the provisions of Chapter 13, Laws of 1919, Special Session. In 1963, the Governing Body of the Roseau River Drainage and Conservancy District having petitioned the District Court, Roseau County as authorized in Minnesota Statutes, 112.74 for the right to operate and exercise all the rights and authority contained in Sections 112.34 - 112.83 of Minnesota Statutes. The Court, having heard the evidence adduced by the petitioners in favor of granting their petition, did order on June 17, 1963 that from and after this date the, the Roseau River Drainage and Conservancy District and its Governing Board shall operate under and exercise all the rights and authority contained in Section 112.34 - 112.83 of Minnesota Statutes, known as the "Minnesota Watershed Act", and shall hereafter be a Watershed District in accordance with the terms and provisions of the said "Minnesota Watershed Act", and the County Board of Commissioners of Roseau and Kittson Counties having petitioned the Minnesota Water Resource Board on November 20, 1963, asking for a change in boundary, for a change in name of said District to Roseau River Watershed District, and to designate a place of business for the Watershed District, pursuant to the provisions of Minnesota Laws of 1955, Chapter 799, as amended, and the Minnesota Water Resource Board having held a hearing on February 19, 1964 in Roseau did order on March 18, 1964, the change in name of the Roseau River Drainage and Conservancy District to the Roseau River Watershed District, the City of Roseau to be the place of business of the Roseau River Watershed District, and did define the District's boundary.

The board of managers initially adopted an Overall Plan for the RRWD on August 18, 1964. The plan was submitted to the Minnesota Water Resource Board. The Minnesota Water Resource Board on April 20, 1965 approved the Overall Plan. In June of 2004 the Board of Managers approved an update of the Overall Plan. The plan is on file in the Roseau River Watershed office and online at [www.roseauriverwd.com](http://www.roseauriverwd.com).

# **MISSION STATEMENT**

It is the intention of the Board of Managers to manage the waters and related resources within the Roseau River Watershed District in a reasonable and orderly manner which will improve the general welfare and public health of the residents of the District.

The Board of Managers accepts the responsibilities with which they are charged as a governing body by Minnesota Statutes. Said Board of Managers, in the conduct of the duties and responsibilities conferred upon them, do not intend to usurp the authority or responsibilities of other agencies or governing bodies, however, said Board of Managers will not avoid their responsibilities and obligations.

It is the stated intent of the Managers herein that no person shall be deprived or divested of any previously established beneficial use or right, by any rules of the District, without due process of law. All rules of this district shall be construed according to this intention.

# DISTRICT ACTIVITY

## Website

The RRWD Board contracted with dot.com Connections to create and maintain a District website. The website can be viewed at [www.roseauriverwd.com](http://www.roseauriverwd.com). The District minutes, rules and permit forms are available online. The website is under continued development.

## District Meetings

In 2020, the Board held 12 regular monthly meetings, 6 special meetings, 2 public hearings and various other meetings. Pursuant to Minnesota Statutes §13D.021, because of the declaration by Governor Tim Walz on March 13, 2020 of a Peacetime State of Emergency due to the COVID-19 Pandemic, several meetings were conducted by electronic means. Jason Braaten, as the Chairman of the Roseau River Watershed District Board of Managers, determined that in-person meetings is not practical for several months due to the health pandemic. Several meetings were held either via electronic means or at the Roseau City Center where social distancing guidelines could be achieved.

## Non-District Meetings:

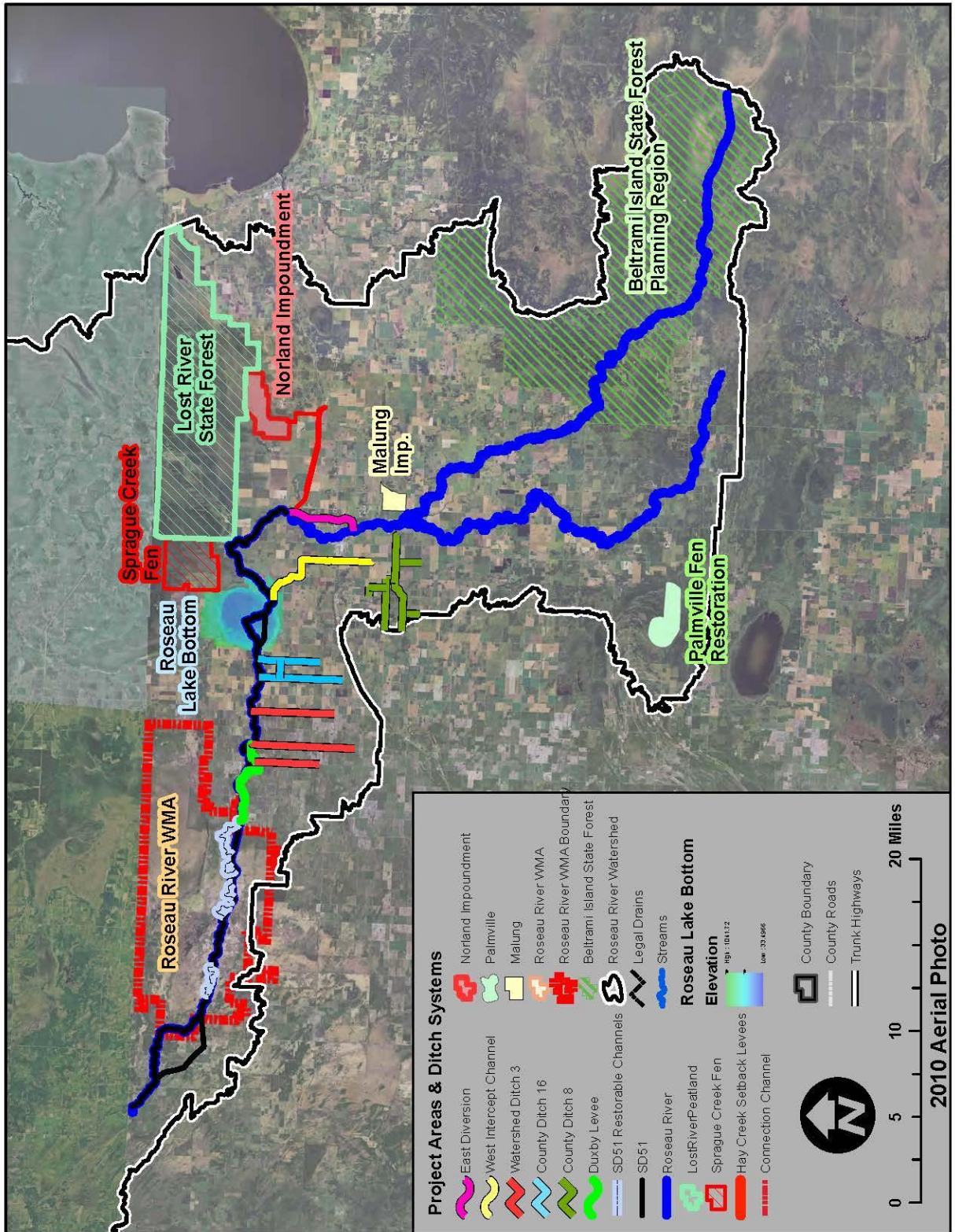
**MAWD** – Due to the pandemic meetings were held virtually.

**RRWMB** - The Red River Watershed Management Board (RRWMB) delegate in 2020 was Jason Braaten. Manager Braaten attended regular monthly meetings as well as various RRWMB committee meetings. The District also participates in an annual conference sponsored by RRWMB and FDRWG held in March of each year.

**RRIW** - The Roseau River International Watershed (RRIW) was created in 2000 with representation from both the United States (Minnesota) and Canada (Manitoba). The group continues to meet to address water related issues and concerns within the Roseau River Basin. The two RRWD board members delegated to represent the RRWD in 2019 were Managers Cody Schmalz and LeRoy Carriere.

**Citizens Advisory Committee (CAC)** - On February 13, 2020 the Citizens Advisory Committee held its annual meeting. The meeting was chaired by CAC member Dave Grafstrom. The group discussed several of the District's proposed projects and outlined suggestions for the RRWD Board of Managers. For a list of committee members, please contact the office.

# Existing Projects & Drainage Systems



# DRAINAGE SYSTEMS

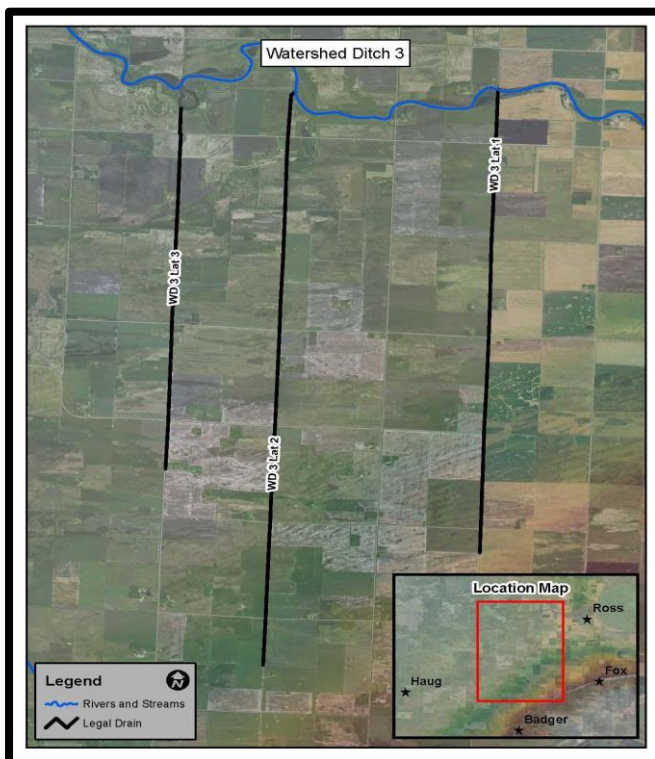
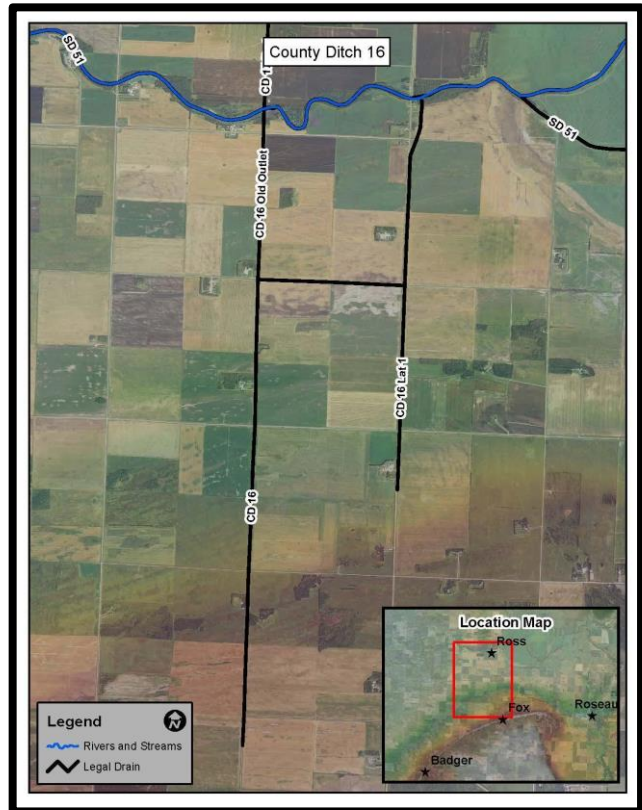
The Roseau River Watershed District is the Ditch Authority for the following systems.

## Watershed Ditch No.1 and Roseau County Ditch No. 16

WD No.1 is a one-mile ditch plus additional outlet for lands drained by Roseau County Ditch Number 16. It is located on the west side of Sections 34 and 27, Dieter Township and drains lands in Dieter and Ross Townships.

CD No. 16 is located in Dieter and Ross Townships, was turned over for administration and management to the Watershed District.

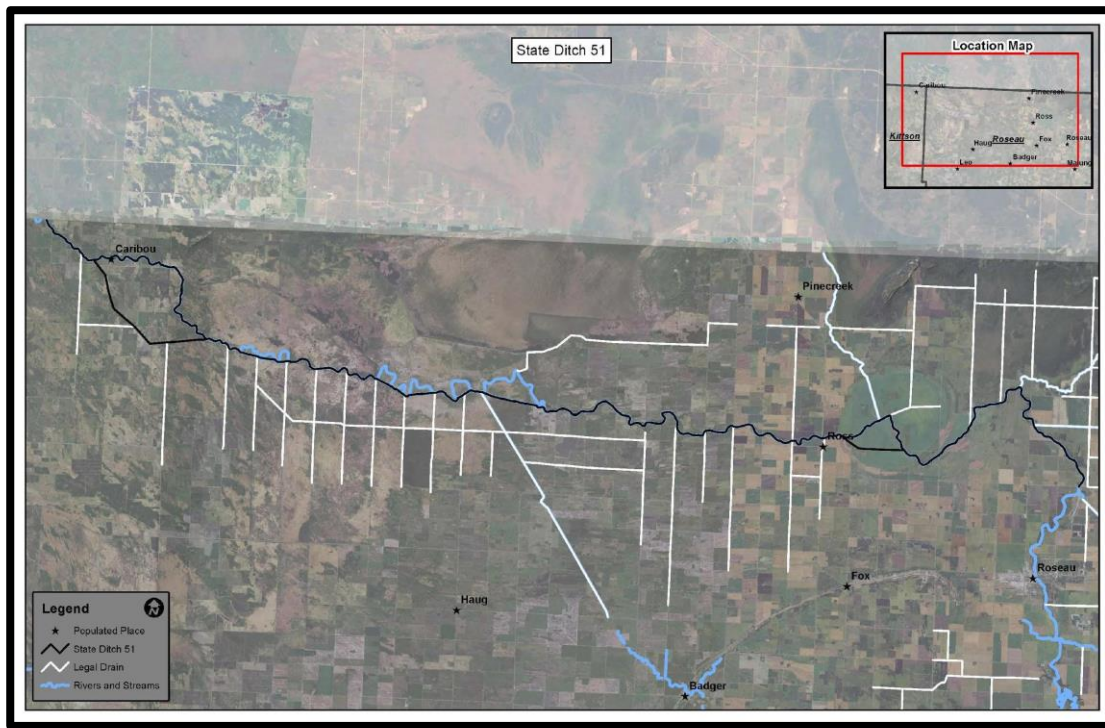
In 2019 the District received an Improvement Petition for this system. At the August 7, 2019 board meeting a public hearing was held on the proposed project. Based upon the evidence presented at the hearing, the Board found that the proposal as stated in the petition, is feasible, and there is a necessity for it. Additionally, the Board found that the public benefit is greater than the environmental impact of the proposed improvement and that the outlet is adequate. The Board directed the engineer to proceed with a detailed survey and appointed viewers.



## Watershed Ditch No.3

This ditch system consists of three laterals draining lands in Ross, Moose, Dieter, and Pohlitz Townships.

In 2020 the district staff conducted survey of all three laterals, collecting profile, cross section and culvert condition data. Information collected from the 2020 survey will inform future maintenance and/or repair.

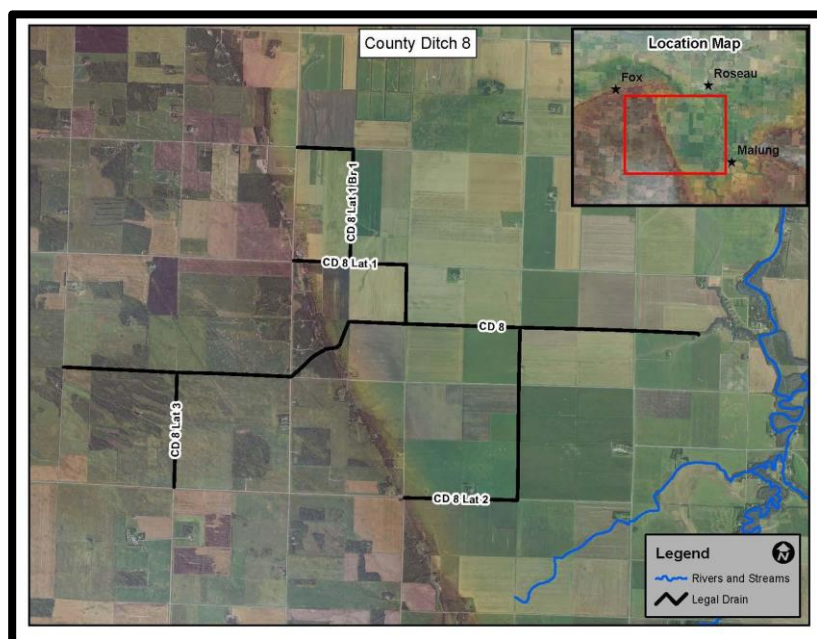


### State Ditch No. 51

Originally established by the State of Minnesota it consisted of 10 river cutoffs constructed in 1906-1907 time frame. In 1914 to 1918, the ditch was improved when the State of Minnesota dug the river channel from the Canadian border to and around the Roseau Lakebed. That expansion paralleled Cutoff Number 10 in Kittson County and followed the other cutoffs constructed in 1906 and 1907. In 1988, SD 51 was expanded when the Roseau County Board of Commissioners turned over the Roseau River and Roseau Lake Bottom portions of Judicial Ditch No. 61 and State Ditch No. 37 to the Roseau River Watershed District. Under Minnesota Statute Authority, these ditches were combined with State Ditch No. 51 at a hearing conducted on October 11, 1988 and continued and concluded on November 1, 1988. The redetermination of benefits process found in excess of 9 million dollars in ditch benefits. In 2020 debris removal was conducted along the entirety of SD51 to retain drainage capacity and prevent damage to infrastructure.

### Roseau County Ditch No.8

This ditch, located in Jadis and Stafford Townships, was turned over for administration and management to the Watershed District. In 2020 district staff conducted a survey of the ditch profile, cross section and culvert condition. Information collected from the 2020 survey will inform future maintenance and/or repair.





# PROGRAMS

## **Permits**

In 2020 there were a total of 32 permit applications for the following activities: installation of culverts for field drainage and driveway accesses, ditch slope repair, ag tiling and ag diking.

## **Roseau River Water Trail Plan**

In 2017 the RRWD along with community partners, initiated a planning process to map the Roseau River, improve accesses and amenities and seek designation as a State Water Trail. In late 2017 a Stakeholder Group was formed. The mission of the group is as follows: The Roseau River Water Trail promotes enjoyment and conservation of natural, cultural, and historical resources of the Roseau River by encouraging responsible, high quality public access opportunities through partnerships and stakeholder advocacy.

The goals were set as follows:

Short Term: 12 – 18 Months

- Establish stakeholder group
- Secure planning funding
- Adopt charter or mission statement
- Identify potential launch sites, points of interest and hazards
- Develop project implementation phases
- Public outreach / civic engagement

Mid-term: 18 months – 3 years

- Map reaches of the river
- Secure implementation funding
- Implement project phases
- Public outreach / civic engagement
- Develop sustainability plan

Long Term:

- Establishment of the Roseau River from the headwaters to the Canadian border as a mapped Water Trail.
- Establish the Roseau River as an international water trail

The following are objectives laid out by the Stakeholder Group:

- **Promote the Roseau River as a trail of regional significance in Northwest Minnesota:** Water trails connect individuals, families, and groups with a variety of hiking trails, bikeways, museums, historic sites, parks, and public lands. They cultivate a sense of place and love of community.
- **Promote the Roseau City Park and Hayes Lake SP as premier camping destinations in Northwest Minnesota:** Outdoor enthusiast will appreciate all these campgrounds have to offer as they explore the water trail.
- **Stewardship:** Water trails utilize minimum-impact practices and cultivate stewards of the water, land, vegetation, wildlife, and other resources.
- **Education:** Serving as outdoor classrooms, water trails promote an awareness of the natural and cultural attributes of the area through experiences.
- **Conservation:** Water Trail activities support conservation of aquatic ecosystems and contiguous lands building a constituency of resource protection and restoration advocates.
- **Diversity:** Through shared work and play, water trails benefit community members from all walks of life promoting access to natural resources and educational opportunities thereby fostering tolerance and understanding.

- **Wellness and well-being:** Water trails provide wholesome, fresh-air activities promoting overall fitness and health of participants.

In 2018, with financial support from the RRWD, Evans Foundation, HDR Engineering, a new boat dock and Kayak launch were installed at the Roseau City Park. The Stakeholder group also moved forward with drafting a Master Plan. Partnering with U of M Extension, Northwest Minnesota Foundation, Center for Urban and Regional Affairs (CURA), Center for Sustainable Building Research (CSBR) and the U of M College of Design, the RRWD worked with Viraita Singh, Senior Research Fellow at CSBR and Miranda Olson, Graduate Research Assistant to create the Roseau River Water Trail Masterplan. Copies of the plan are available on our website or at the office. In 2020 work continued with funding applications for the Roseau City Center site and continued landowner outreach. However, due to Covid-19 Pandemic restrictions no site work was completed.



### **Board of Water and Soil Resources Competitive Grants Program Participation**

In 2015 the RRWD applied for and received two grants totaling \$259,500. The CD8 Subwatershed Sediment Reduction Project grant, in the amount of \$147,700, will be used to install 2 rock drop structures, 320+ feet of bank stabilization work and 20+ side water inlets in the County Ditch 8 system. As of the end of 2018, the bank stabilization, drop structures and several side inlets have been installed with the remaining side inlets to be installed in the 2019 construction season.



The other grant, the Roseau Lake Water Quality Improvement Report, was for \$111,800. The goal of this project is to develop a report that will include a prioritized, targeted, and measurable implementation plan that will improve water quality in the Roseau Lake subwatershed. The project will result in development of site-specific implementation actions through use of the Prioritize, Targeting, and Measuring Application (PTMApp) and the Drained Wetland Basin Inventory terrain analysis methods. The PTMApp will be used to identify and evaluate the suitability and effectiveness of best management/conservation practices in the watershed including treatment train scenarios, and provide estimates of sediment, nitrogen and phosphorus delivered (and subsequently treated) to the lake. The Drained Wetland Basin Inventory will identify the location of restorable wetlands in the watershed along with their volume, depth, and drainage area, which will be used to prioritize and target restoration efforts for multiple purposes including water quality, habitat, and flood damage reduction. Final project outcomes will be a targeted water quality improvement plan that includes the 100 most effective projects to improve water quality in the watershed based on cost and total load reduction to the lake. Because of the value of this type of information, the RRWD is funding this work beyond Roseau Lake to the Canadian border. Our Canadian counterparts also see the benefit of this work and decided to partner with the RRWD, International Water Institute and Houston Engineering to create a report for the Canadian portion of the Roseau River watershed as well.

This has become a multi-agency, international endeavor to help promote clean water and best management practices.

These projects have both been completed and additional information is available at the RRWD office.

### **2018 Sediment Reduction Grant**

The RRWD Received a BWSR Clean Water Multipurpose Drainage Management grant for the State Ditch 51 (SD 51) Sediment Reduction Strategy. This is an ongoing effort to improve both water quality and drainage efficiency within SD 51 and its tributary ditches and streams. SD 51, consisting of dredged and channelized portions of the Roseau River downstream of the City of Roseau, is impaired due to turbidity.



In the initial phase of this effort, the RRWD in cooperation with

landowners, road authorities, and the Roseau SWCD implemented conservation practices on five high priority sites targeted due to the large volume of sediment they contribute to SD 51. The sites selected were identified through a 2014 SEDLCP grant as a high priority concern due to extensive gully erosion and modeled high erodibility factors.

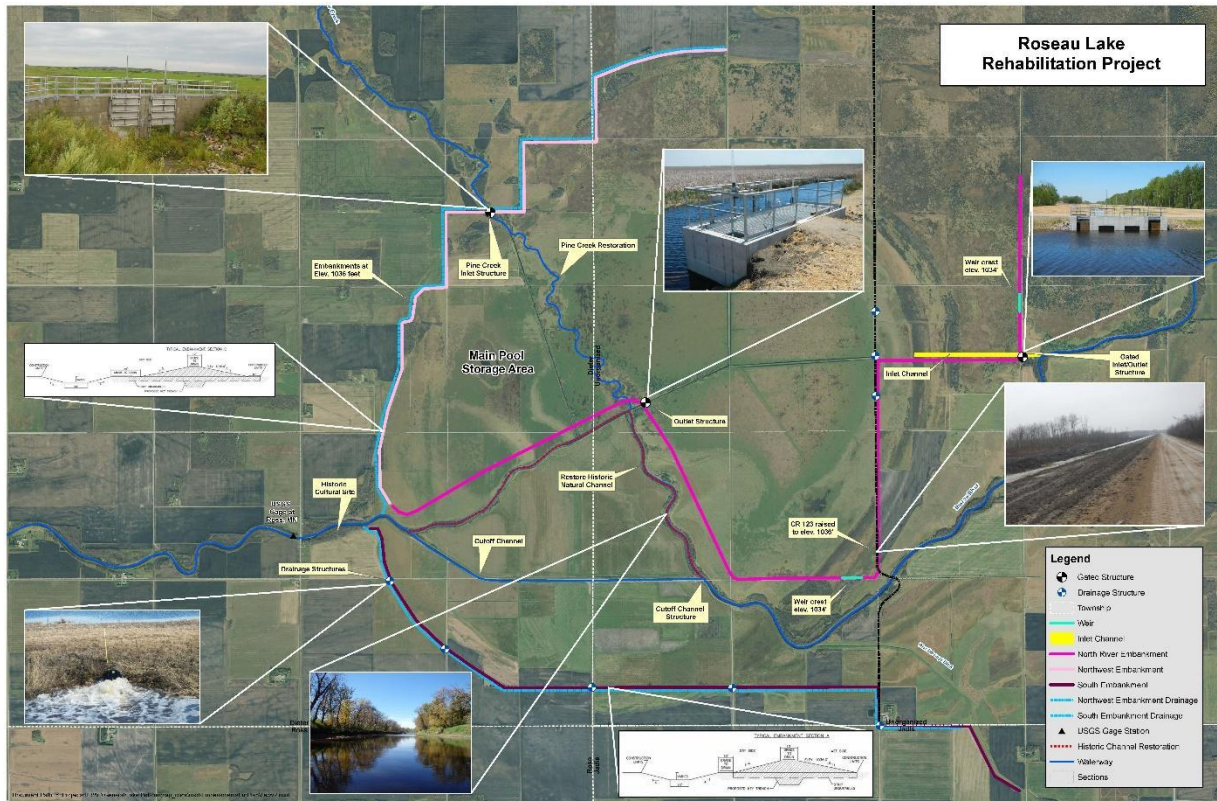
The five sites identified contribute 228 tons of sediment annually into SD 51. Each of the identified sites constructed are 410 grade stabilization structures preventing future head cutting and sediment deposition into SD 51. The overall budget for the first phase of this project was \$69,500. Project costs consist of engineering, construction, and administrative costs associated with all five sites.

Future phases of the SD 51 Sediment Reduction Strategy will utilize information derived from the Roseau Lake Water Quality Report (PTMApp) to prioritize, target, and measure additional sites and prescribe appropriate conservation practices.

**2019 BWSR Multipurpose Drainage Management Grant** – In September a grant application was submitted initiating a water quality improvement project to reduce sediment contribution from the County Ditch 16 (CD 16) subwatershed. The RRWD in cooperation with landowners, road authorities, and the Roseau SWCD will implement conservation practices on 27 priority sites targeted due to the large volume of sediment they contribute to State Ditch 51 (SD 51). The sites are located along CD 16 which drains directly into SD 51 and were identified through the Prioritize Target Measure Application (PTMApp) as priority concerns needing protection from chronic erosion. This work would be done in conjunction with the CD 16 Improvement Project. The 27 sites identified contribute 84 tons of sediment annually into SD 51 in accordance with the PTMApp toolbar. The annual sediment yield estimates for the target subwatershed are between 170.05-340.05 tons, according the draft WRAPS report for the Roseau River Watershed. Each of the identified sites constructed would consist of grade stabilization structures preventing head cutting and sediment deposition into the river.

# PROJECTS

## Roseau Lake Rehabilitation Project



The Roseau Lake Bottom has provided many years of flood control benefits to the area, but over the years it has become evident that having the ability to control the timing of when the Lake Bottom floods would be beneficial. The Lake Bottom currently floods with “early water”, which diminishes or eliminates the available flood storage when the flood peak of the Roseau River moves through the area. This is a multi-purpose project intended to provide the following benefits:

### **Flood Control**

- Provide more efficient flood storage and improve the timing of 60,000 A-F of flood storage in the Roseau River Wildlife Management Area – Lake Bottom Unit.
- Provide flood damage reduction downstream at Caribou by decreasing peak flows at Caribou.
- Manage storage and flow release in beneficial consideration of Red River peak flows.
- Provide flood damage reduction in agricultural areas upstream and south of the Big Swamp along the Roseau River in Moose, Soler, Dieter, and Pohlitz Townships.

### **Habitat Restoration**

- Streamflow augmentation improved dissolved oxygen levels, enhanced habitat, and improved water level management.
- Improve water level management in the Lake Bottom Unit for vegetation management.
- Control pool bounce to improve nesting success;

**Erosion Reduction:** Reduction in riverbank erosion and bank sloughing on the Roseau River.

The status of the project at the end of 2020 is as follows:

### **Planning**

- Final Engineer’s Report submitted in July, 2019
- Operation and Maintenance Plans being developed
- Initial Access and Recreation Plans being drafted

### **Permitting**

- COE Concurrence Points (CP) 1, 2 & 3 approved.
- Environmental Assessment Worksheet in process

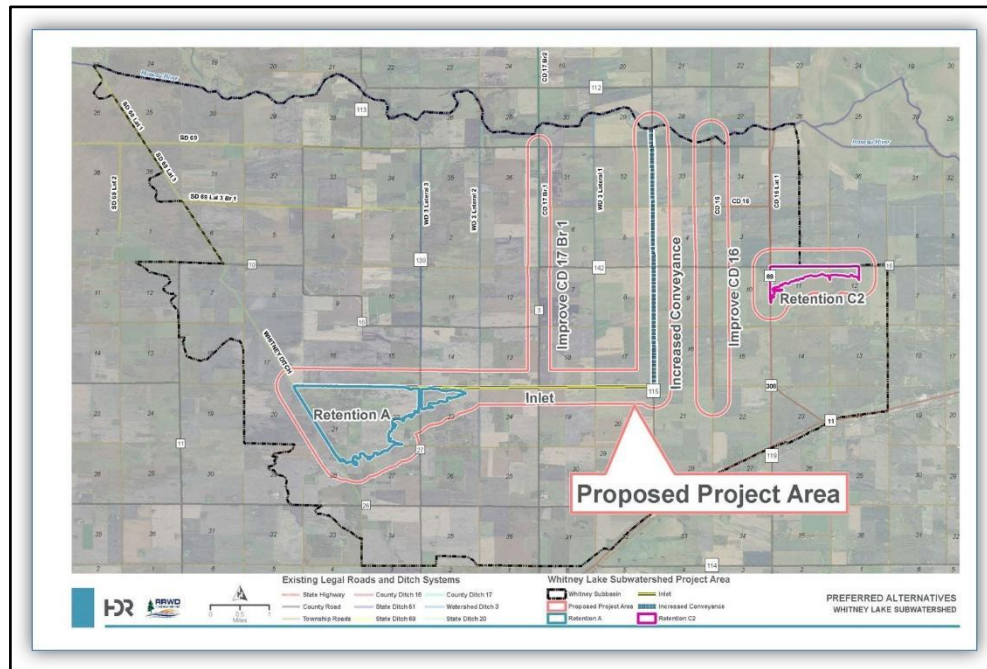
**Funding - Projected Project Cost:**  
\$15,000,000

\$200K FDR grant  
agreement in Sept 2017 & \$1M  
in 2018

2.67 M in LOSHC funding  
RRWMB Step II approval  
RRWD local construction

# Whitney Lake Watershed Management

Agricultural producers in the Whitney Lake sub-watershed suffer frequent (every 1-2 years) inundation from even minor events in both the spring and summer causing crop loss and/or damage. The Project Team has identified problem areas, defined strategic solutions, and provided planning guidance to implement construction of retention and drainage projects. The goal is to construct a multi-purpose water management project that will meet the purpose and needs identified, meet permitting requirements and be economically feasible. The District will utilize the Project Team process as identified in the *Red River Basin Flood Damage Reduction Work Group Agreement*.



## Project Benefits:

### Flood Damage Reduction

- Reduce agricultural and private land damages
- Reduce risk of road damages

### Flood Detention

- Reduce peak flows during high runoff events
- Contribute to regional goal of reducing peak flows to the Red River

### Erosion Reduction

- Improve stability of watercourses
- Reduce sediment and nutrient loading from upland sources
- Improve water quality
- Positive impact for wildlife and fish

**Partners:** Landowners, Red River Watershed Management Board (RRWMB), Natural Resource Conservation Service (NRCS), Minnesota Department of Natural Resources (MN DNR) and State of Minnesota Flood Damage Reduction Program.

**Status:** The project is in the planning phase following the NRCS Regional Conservation Partnership Program (RCPP) process, which was expected to be completed in 2020, however a one year extension was granted due to the Covid-19 Pandemic. In 2019 the Board received a petition for the Improvement of CD 16, one component of the preferred alternative. Retention Sites A and C are proceeding through the RRWMB Step process for funding. The RRWD Board received a petition to establish Watershed Ditch #4 (WD #4) which was identified as a component of the overall Whitney Lake Project area.

## Roseau River Restoration Project

**Description/Location:** The proposed restoration reach lies largely within the DNR Wildlife Management Area in Roseau County, MN. This reach of the river was channelized by the construction of State Ditch 51 which reduced the length of the river, increased its slope, and caused the river to be disconnected from its floodplain. Historic oxbows remain intact, harbor diverse fish communities, and provide habitat for spawning and foraging when accessible during periods of high water. The restoration project will rehabilitate and reconnect the historic river channel and reestablish the natural channel profile and floodplain allowing a sustainable channel to meander over time as well as reconnect critical fish habitat to the main channel.



### **Project Goals:**

#### **Channel Restoration**

- Reconnect historic river channel
- Reestablish natural channel and floodplain

#### **Enhance Wildlife Habitat**

- Reconnect oxbows to provide crucial spawning and foraging habitat for fish
- Increase the amount of large river habitat within the watershed
- Restore riparian habitat

#### **Erosion Reduction**

- Improve bank stability
- Reduce sedimentation within the channel
- Improve water quality



### **PROJECT STATUS**

#### **Planning:**

**Project Team is being established**

**Survey work was completed in the fall of 2020**

#### **Permitting:**

**Permits that may be required include**

**DNR**

**Permit**

**USACE**

**WCA**

**EAW**

**103E**

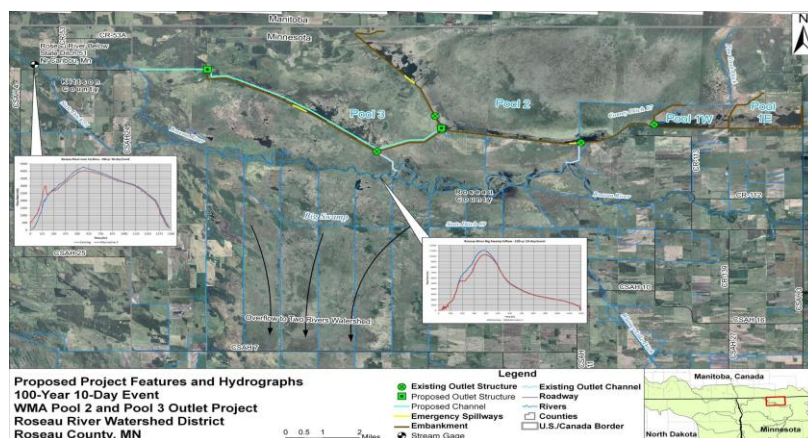
**Minnesota Drainage**

#### **Funding:**

**LSOHC Outdoor Heritage Fund award for \$3,036,000.00 in 2020**

**Other funding options include: RRWD, MN DNR, RRWMB, IWI, US FWS**

# Roseau River Wildlife Management Area Pool 3 Outlet Project



**Description/Location:** The Roseau River Wildlife Management (RRWMA) is located in northwestern Minnesota along the Canadian Border. This wildlife impoundment was constructed in 1952 and 1953. The stated purpose of the project was wildlife enhancement and flood control. The RRWMA project was modified in the late 1980's to extend its life and to increase its flood control benefits.

This impoundment has provided many years of flood control benefits to the area, but over the years of operations it has become evident that having the ability to transfer waters between the pools to aid in flood control is beneficial. Experience has also been shown that being able to discharge large volumes of water, from the impoundment, before the Roseau River flood reaches this area, would increase the flood damage reduction effectiveness of the available water storage, thereby lessening damages downstream on the Roseau River and the Two Rivers.

## Project Benefits

### Flood Damage Reduction (FDR)

- Replaced the failing control structure between Pools 2 & 3;
- Improve water level management for vegetation management.
- Control pool bounce to improve nesting success;
- Provide more efficient flood storage and improve the timing of 8,000 A-F of flood storage in the RRWMA
- Provide FDR downstream at Caribou;
- Manage storage and flow release in beneficial consideration of Red River peak flows;
- Provide FDR in agricultural areas upstream and south of the Big Swamp along the Roseau River in Moose, Soler, Dieter and Pohlitz Township.

### Habitat Restoration

- Stream flow augmentation, improved dissolved oxygen levels, enhanced fish habitat, improve water management capability

### Erosion Reduction

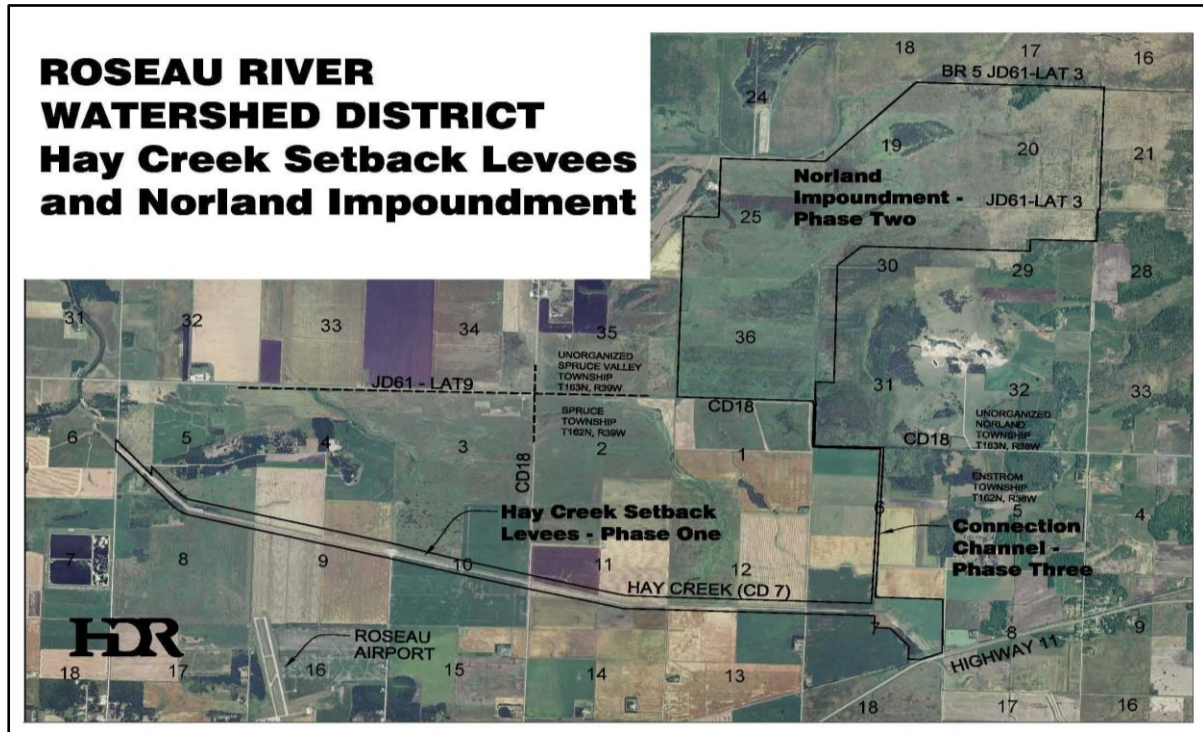
- Reduction in riverbank erosion and bank sloughing on the Roseau River.

**Partners:** Red River Watershed Management Board, Minnesota Department of Natural Resources and State of Minnesota Flood Damage Reduction Program.

**Status:** The final construction was completed in 2018. Initial operation was triggered during flood conditions in the fall of 2019. Maintenance activity and operations according to the Operating Plan were conducted in 2020.



## Hay Creek-Norland



**Description/Location:** The project area includes the lower portion of the Hay Creek watershed and adjacent 37 square mile Norland sub-basin. Hay Creek drains into the Roseau River immediately downstream from the City of Roseau. The project includes three features: 7-mile corridor restoration and floodway enclosed by setback levees, an off-channel impoundment site, and a connection channel. This site provides a total of at least 9,500 acre-feet of gated and un-gated runoff storage.

### Project Benefits

#### Flood Control

- 50% reduction in the 10-yr & a 30% reduction in the 100-yr discharges from Hay Creek/Norland drainage area.
- Reducing backwater and flood durations in the City of Roseau.
- Reduce flooding to 13,300 acres of ag land, 24 miles of roads, 131 miles of ditches, and 27 culverts and bridges.

#### Habitat Restoration

- Stream flow augmentation, improved dissolved oxygen levels, enhanced fish habitat, riparian buffer corridor and wetland restorations.

#### Erosion Reduction

- Reduction in bank erosion on downstream ditches and the Roseau River

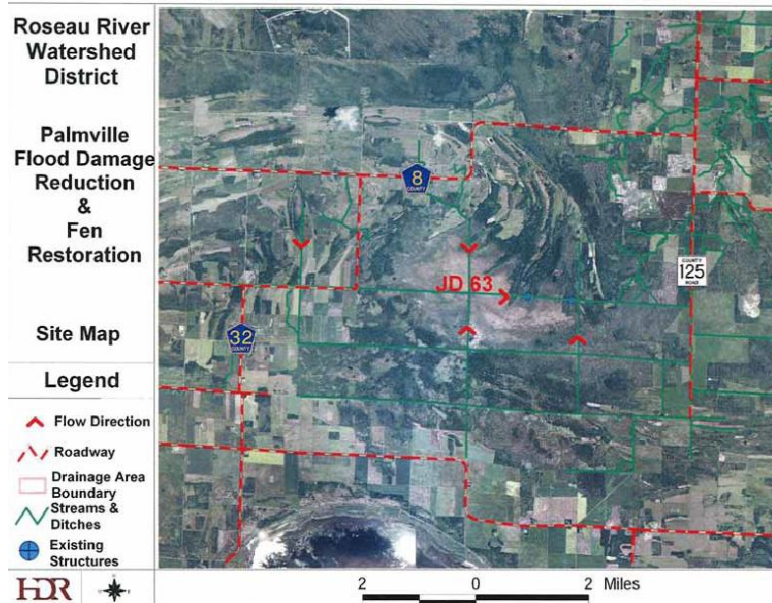
**Partners:** Red River Watershed Management Board and State of Minnesota Flood Damage Reduction Program

**Status:** The project continues to be operational. Haying and mowing activities are part of the ongoing maintenance.





# Palmville Flood Damage Reduction and Fen Restoration Project



**Description/Location:** The Palmville Fen is a major wetland area covering approximately 3,000 acres located in the upper watershed of the South Fork of the Roseau River, primarily on land owned and managed by the State of Minnesota Department of Natural Resources. The Fen has been degraded by the construction of judicial and county ditch systems over the last one hundred years.

The Palmville project is a flood damage reduction (FDR) and natural resource enhancement (NRE) project. Flood control benefits will be provided to immediate areas downstream, the village of Wannaska and the city of Roseau. Fen restoration will hopefully be accomplished by encouraging a greater depth and duration of surface and subsurface flow to spill from the main channel and seep into the adjacent fen.

## Project Benefits

### Flood Damage Reduction (FDR)

- Reduce frequency of high-water events to agricultural lands downstream
- Provide FDR downstream at Wannaska and Roseau.

### Habitat Restoration

- Restore fen to a more natural hydrologic condition.
- Streamflow augmentation, improved dissolved oxygen levels, enhanced fish habitat, improve water management capability

### Erosion Reduction

- Reduction in riverbank erosion and bank sloughing on the Roseau River.

**Partners:** Red River Watershed Management Board, Minnesota Department of Natural Resources and State of Minnesota Flood Damage Reduction Program

**Status:** The project is operational and functioning as designed. In 2020 mowing and rodent management took place.



# FINANCIAL

## Budget

The budget adopted at the September 2019 meeting for 2020 locally funded expenditures is as follows:

Following discussion, a **motion** was made by Manager Carriere seconded by Manager Wensloff to approve the proposed 2020 budget. Motion carried unanimously.

### ADMINISTRATIVE BUDGET

	2020
Salaries & Benefits	\$ 145,000.00
Manager's per diem and expenses	\$ 12,000.00
Dues & registrations	\$ 5,000.00
Engineering	\$ 4,000.00
Legal & other professional services	\$ 20,000.00
Real estate taxes	\$ 13,000.00
Utilities	\$ 4,650.00
Insurance	\$ 6,000.00
Telephone & internet	\$ 2,850.00
Office supplies & misc	\$ 12,725.00
Cap. Outlay & building maintenance	\$ 8,000.00
Stream gaging	\$ 11,375.00
RRWD projects / maintenance	\$ -
Programs & planning	\$ 5,400.00
	\$ 250,000.00

After a motion by Manager Wensloff, seconded by Manager Carriere, the board adopted the following ditch levies.

#### Ditch system levies for the year 2020:

- 10% levy on WD#3 Ditch System
- 20% levy on Ditch #8
- 25% levy on Ditch #16
- \$ 2,500.00 levy on West Interceptor

A one percent assessment on redetermined benefits on State Ditch #51:  
approximate figures are as follows;

Roseau County	\$88,177.69
Kittson County	\$ 1,155.02
Marshall County	\$ 641.92
Beltrami County	\$ 899.65
Lake of the Woods County	\$ 648.60

After a motion by Manager Wensloff, seconded by Manager Schmalz, the board adopted the Red River Watershed Management Board (RRWMB) levy and ad valorem tax in the amount of .0003627 percent of the estimated market value of all taxable property within this district and within the counties set forth in Chapter 162, 1976 Session Laws. Half of the proceeds of this levy were sent to the RRWMB, half remained with the RRWD as Construction Funds.

## **Financial Summary**

This section summarizes the District's financial activity for 2020. The information provided in this section is a summary of the activity for the year. A detailed report of all activity within the respective fund accounts is available for review at the District's office. By law the Roseau River Watershed District is allowed to establish several funds for the purpose of carrying out their duties. To finance these funds the District levies an "ad valorem" tax, meaning in "proportion to the value," over the entire watershed district and is based on the property value, rather than benefits. The following is a brief summary of types of funds established and the ways they assist in carrying out the goals of the District.

### **General Fund**

This is the general operating fund of the District. The fund is set up for the purpose of providing for the general administrative expenses and for the construction and maintenance of projects of common benefit to the District. The levy to fund the Administrative fund may not exceed 0.00048 percent of taxable market value or \$250,000, whichever is less.

### **Red River Watershed Management Board Construction Fund**

This is established and used for the development of programs and projects of benefit to the District. The levy to fund the Red River Water Management Construction Fund may not exceed 0.0004836 of the taxable market value of the property in the District. One-half of the levied funds received are sent to the Red River Watershed Management Board for programs and projects that have common benefit in the Red River Basin. The second half of the levy is utilized for projects beneficial to the management goals of the District.

### **Other Income**

These are other sources that are received by the District that include funds from grants and aids as well as reimbursement from other governmental agencies.

### **2020 Financial Audit**

The basic financial statements provided by the District's accountant for the year (January 1, through December 31, 2020) as augmented with the Legal Compliance are available upon request and are on the RRWD website.